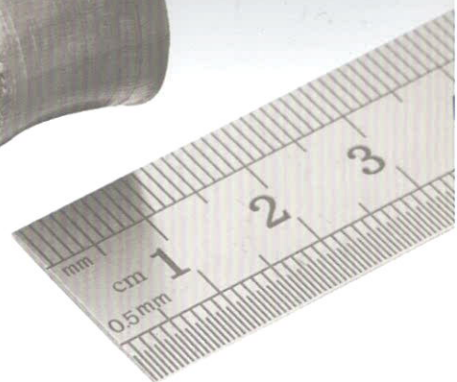
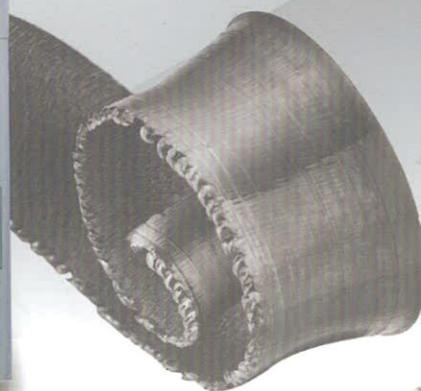


ACCUWAY

UV75/100

**VERTICAL TURNING
CENTER**



Construction

Accuway vertical turning center UV series are designed and built to withstand the most demanding applications in various industries. UV series lathes offer high-efficiency, high-accuracy, excellent rigidity and great stability.

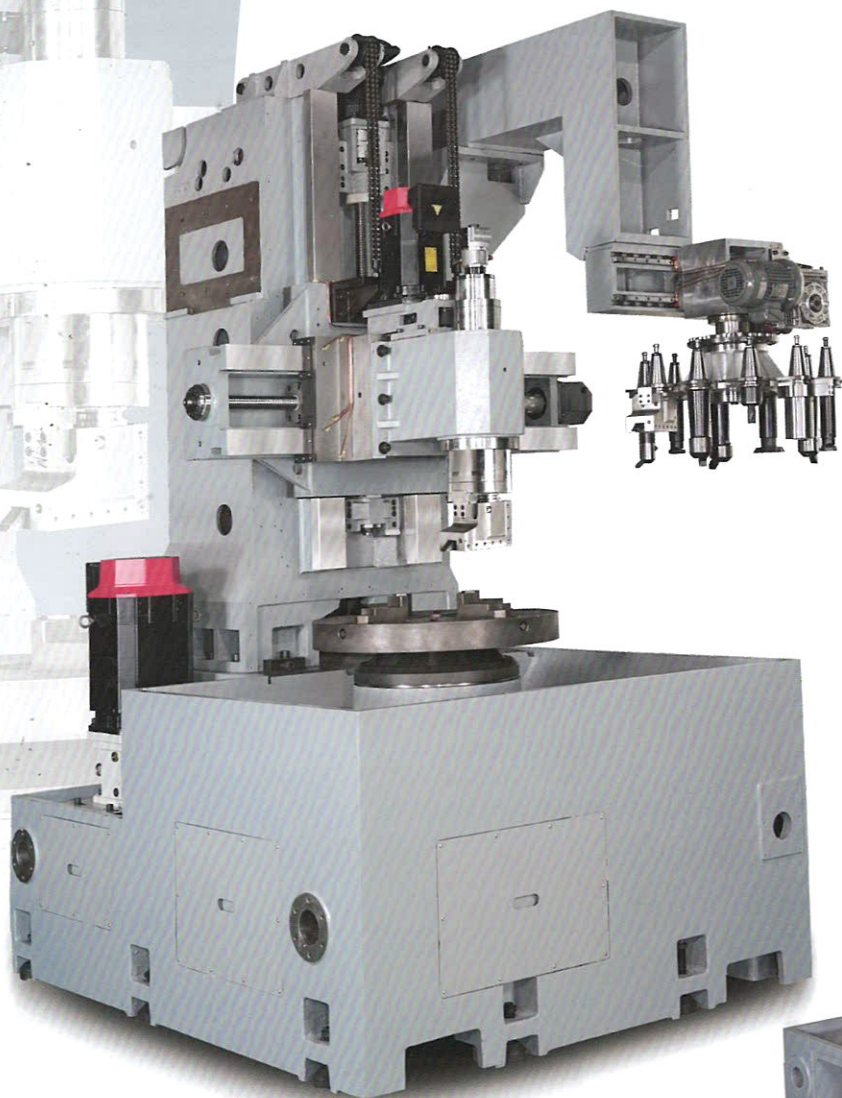
Structure

- Meehanite castings are internally reinforced with heavy ribs to resist bending and damp vibrations. Symmetric ribs not only increase rigidity but improve thermal stability.
- Massive base and column further decrease natural frequency, ensuring precise accuracy and repeatability.

Column

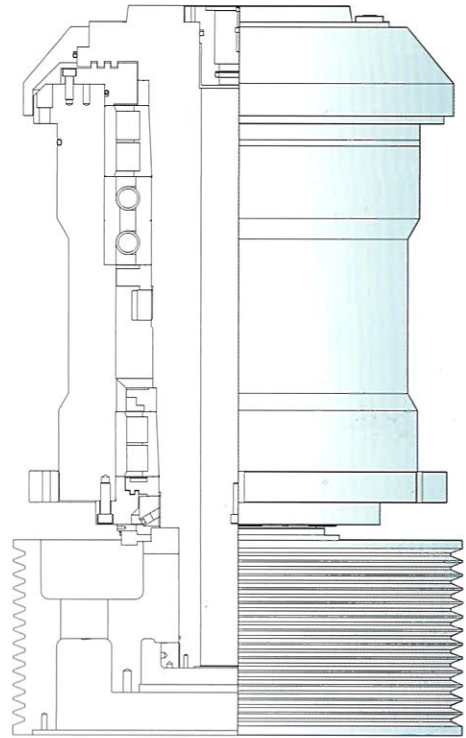
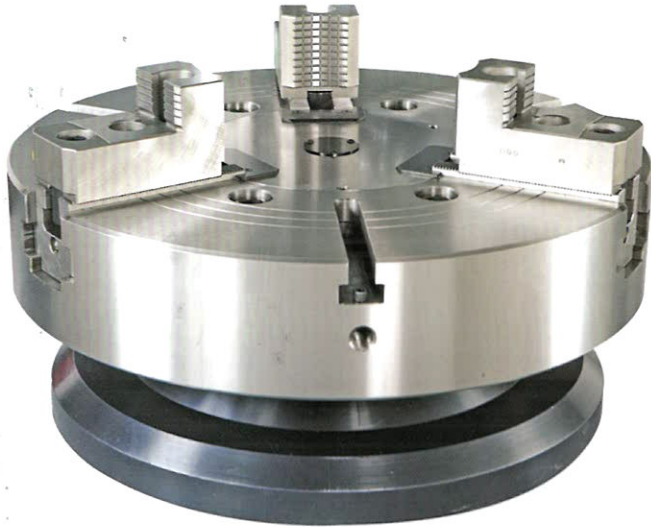


Base

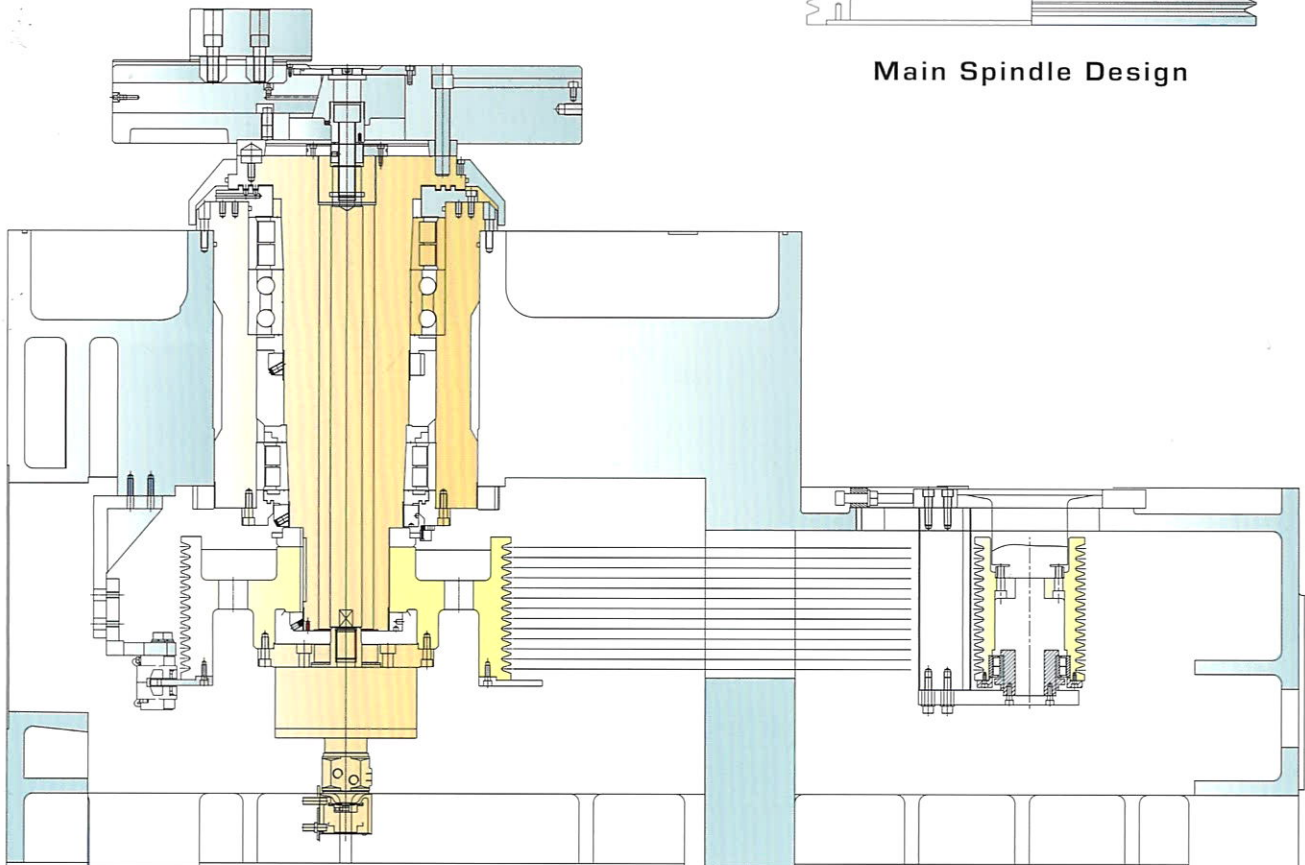


Main Spindle

- Large diameter main spindle bearing combining with wide range torque spindle motor offers highest rigidity while machining. Its strong structure further provides vibration absorption under the most demanding conditions to obtain excellent accuracy of versatile work- pieces.



Main Spindle Design



Main Spindle Drive